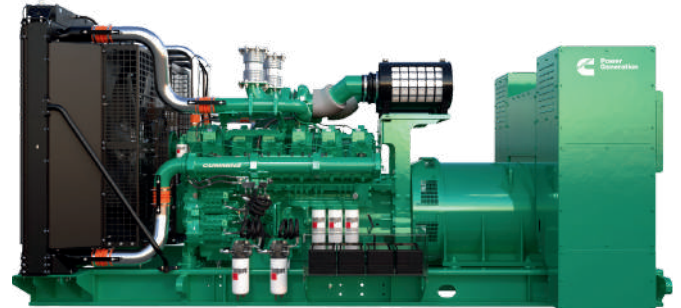


General Data

| | |
|---------------------|-----------|
| Prime power (PRP) | 251.0 kVA |
| Prime power (PRP) | 201.0 kW |
| Standby power (LTP) | 283.0 kVA |
| Standby power (LTP) | 226.0 kW |
| Frequency | 50Hz |
| Voltage | 230/400 V |
| Power factor | 0.8 |



Engine characteristics

| | |
|----------------|--------------------------|
| Engine brand | CUMMINS |
| Engine model | QSL9G3 |
| Cylinders | 6 |
| Speed | 1500 rpm |
| Cubic Capacity | 8.8 L |
| Air intake | Turbocharged, air-cooled |
| Oil Quantity | 26.5 L |
| Stage | Stage 2 |

Alternator

| | |
|----------------------|-------------|
| Alternator brand | Stamford |
| Alternator model | HCI444C |
| PRP Power | 251.0 kVA |
| LTP Power | 283.0 kVA |
| Phases | 3PH/1PH + N |
| Terminal number | 12 nr. |
| IP Protection | 23 |
| Electronic regulator | AS440 |
| Precision | 1.5 +/- % |

Control system

| | |
|----------------------|-----------|
| Control system brand | Deep Sea |
| Control system model | 6110MKIII |
| Standard voltage | 24 Vdc |

Fuel consumption

| | |
|-------------------------|----------|
| Fuel cons. @ 100% (PRP) | 59.0 L/h |
| Fuel cons. @ 75% (PRP) | 49.0 L/h |
| Fuel cons. @ 50% (PRP) | 34.0 L/h |
| Fuel cons. @ 25% (PRP) | 18.0 L/h |

Cooling system

| | |
|---------------------|-----------|
| Cooling | Water |
| Heat from radiator | -- kW |
| Heat from radiation | -- kW |
| Exhaust temperature | 560°C |
| Cooling air flow | -- m3/h |
| Combustion air flow | 1116 m3/h |
| Exhaust gas flow | 2862 m3/h |

Exhaust system

| | |
|-----------------------------|-----------|
| Max intake combustion | 6200 Pa |
| Combustion air volume | 1116 m3/h |
| Max exhaust gas temperature | 560°C |
| Exhaust gas flow | 2862 m3/h |
| Max back pressure | 10200 Pa |

Dimensions & weight (Open frame)

| | |
|-------------------|---------|
| Length | 2157 mm |
| Width | 1126 mm |
| Height | 1562 mm |
| Mass (dry) | 940 kg |

References

Fuel consumption is nominal and refers to specific weight 0.850kg/l.

Dimensions, weights and other specifications contained in the technical data sheet and related attachments are nominal, subject to tolerances and refer to the model with standard equipment. Any optional and additional equipment / accessories can modify weight, dimensions and performance.

PRP Prime Power-Continuous power at variable load

The power that a generator can supply in continuous service at a variable load for an unlimited number of hours per year while respecting the maintenance intervals established in the environmental conditions stated by the manufacturer according to ISO8528-1. The average power supplied over time and any applicable overload must be less than the percentages stated by the manufacturer.

LTP Limited-time running power-Limited power

The maximum power that a generator can supply for a limited time respecting the maintenance intervals established in the environmental conditions stated by the manufacturer according to ISO8528-1. The number of hours per year is stated by the manufacturer. Overload is not permitted.